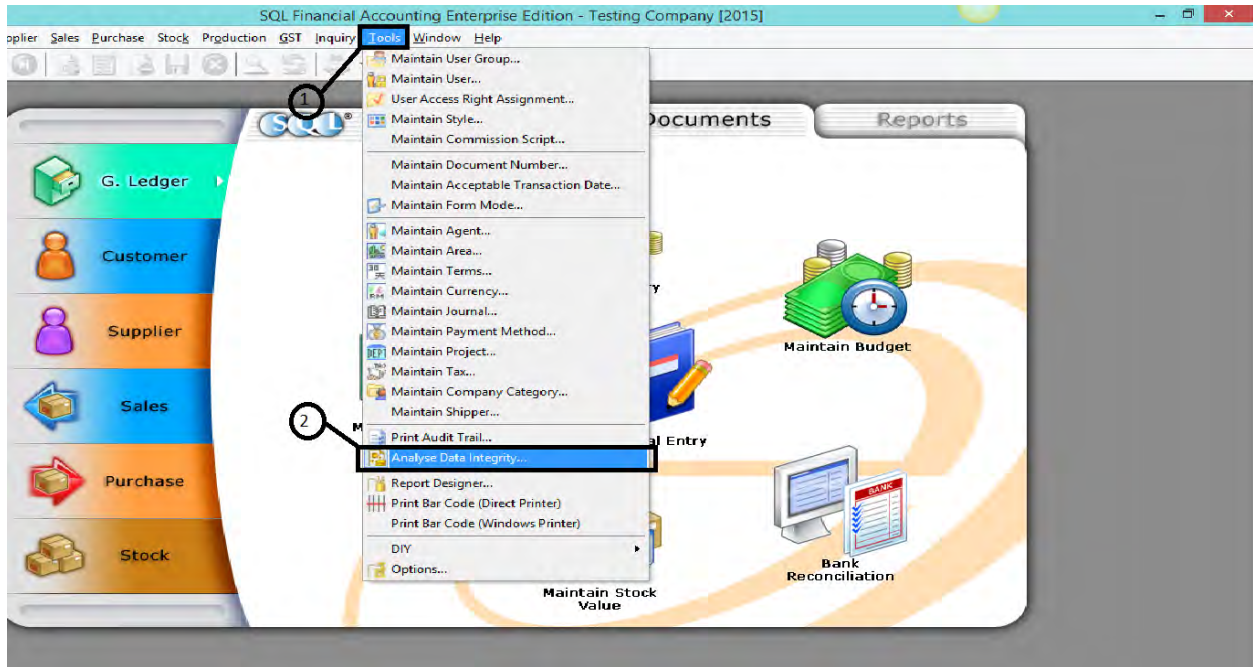


Analyse Data Integrity

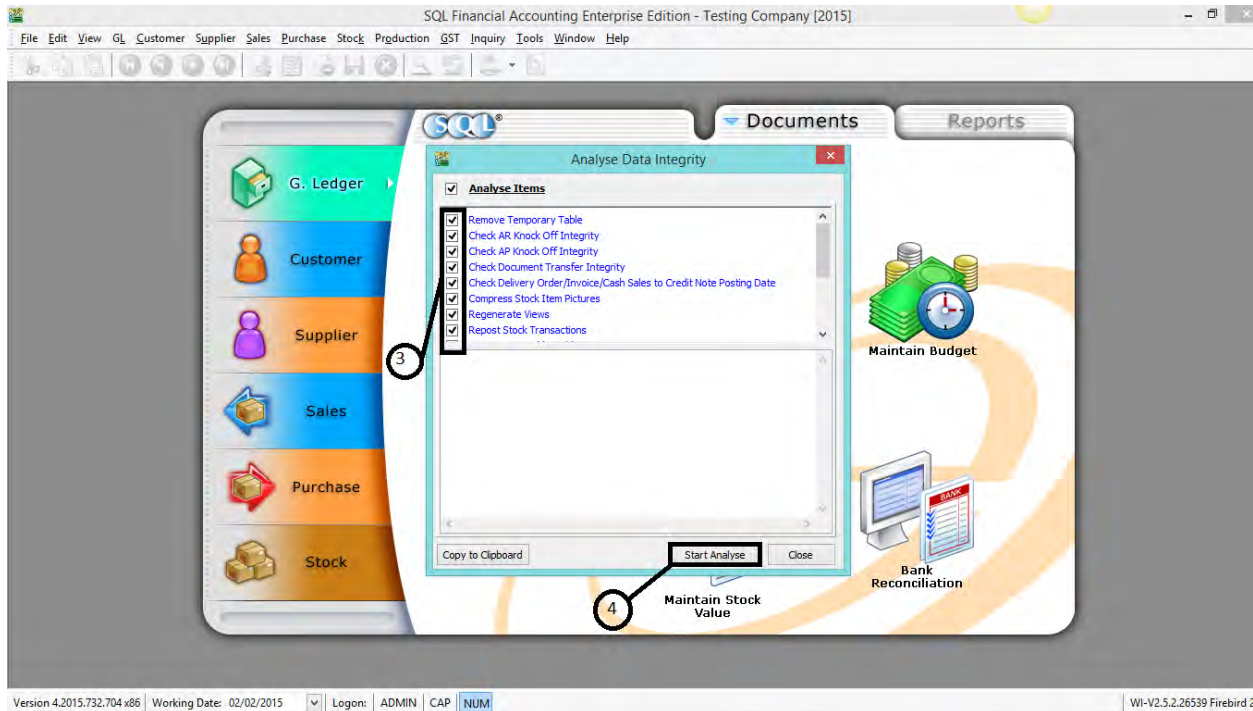
Recommended to run every day or at least once per week.

(User logged in)

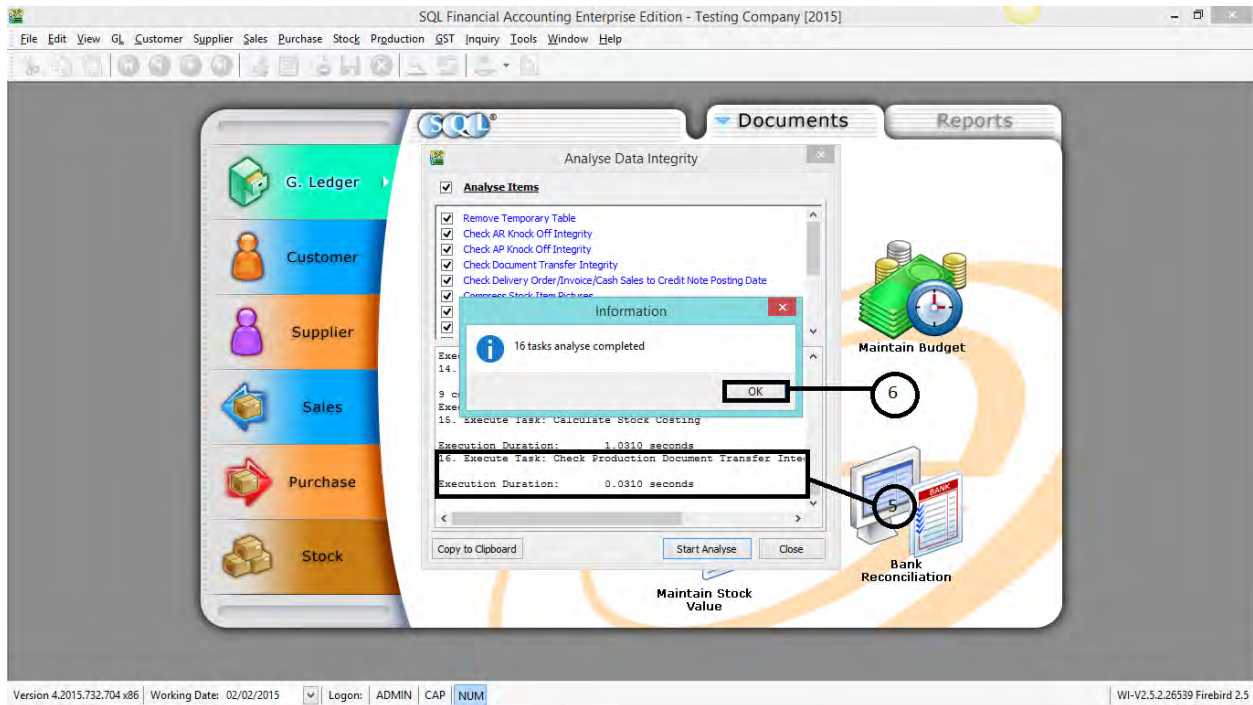
Step 1: Go to Tools > Analyse data integrity.



Step 2: Click Start Analyse. (Proceed if user wanted to run for all option for Analyse Item checkbox)



Step 3: Click on Ok and Close.



Check on the item you want to run analyse. (Recommend all)

Number of item analysed will be shown completed in step 5.

If any message show out when running analyse, save the error message and proceed to call for support desk.

Hints-

- i) If your SQL is not responding on the half way of running analyse, it is normal because the system is analysing your data unless if it is taking too long.
- ii) It is important for you to backup your data everyday also.