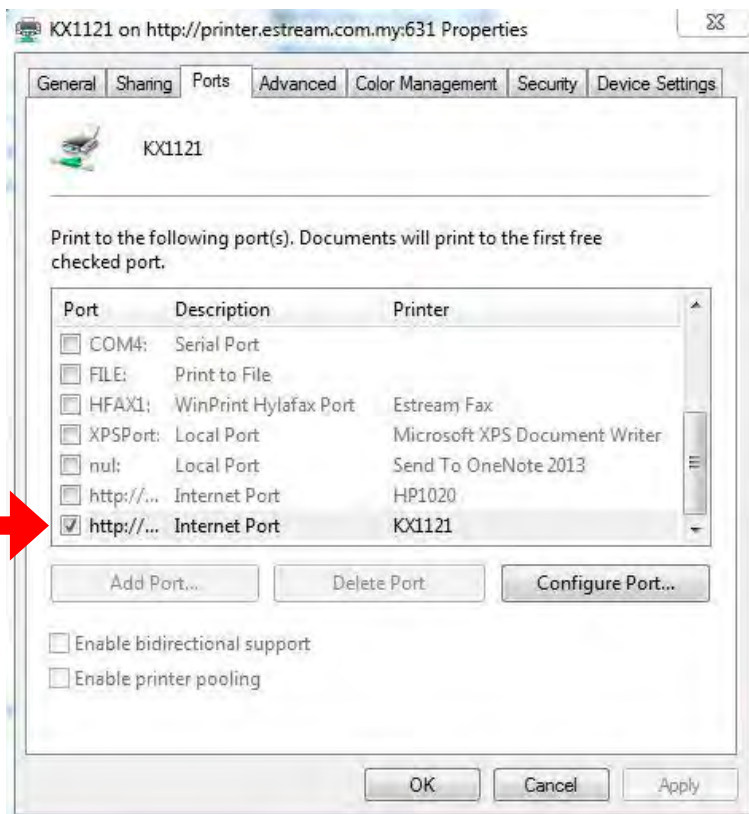
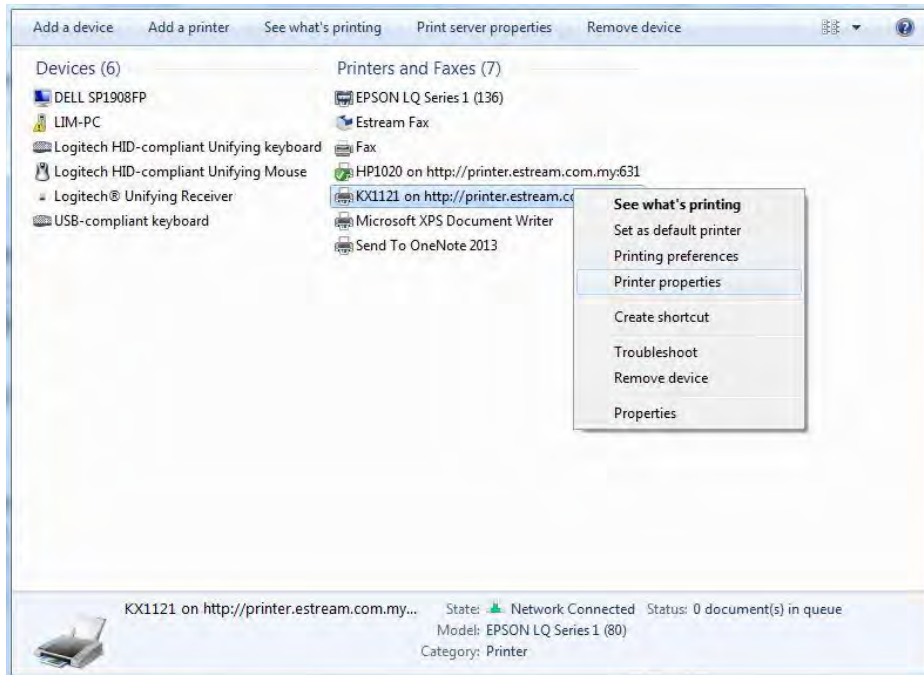
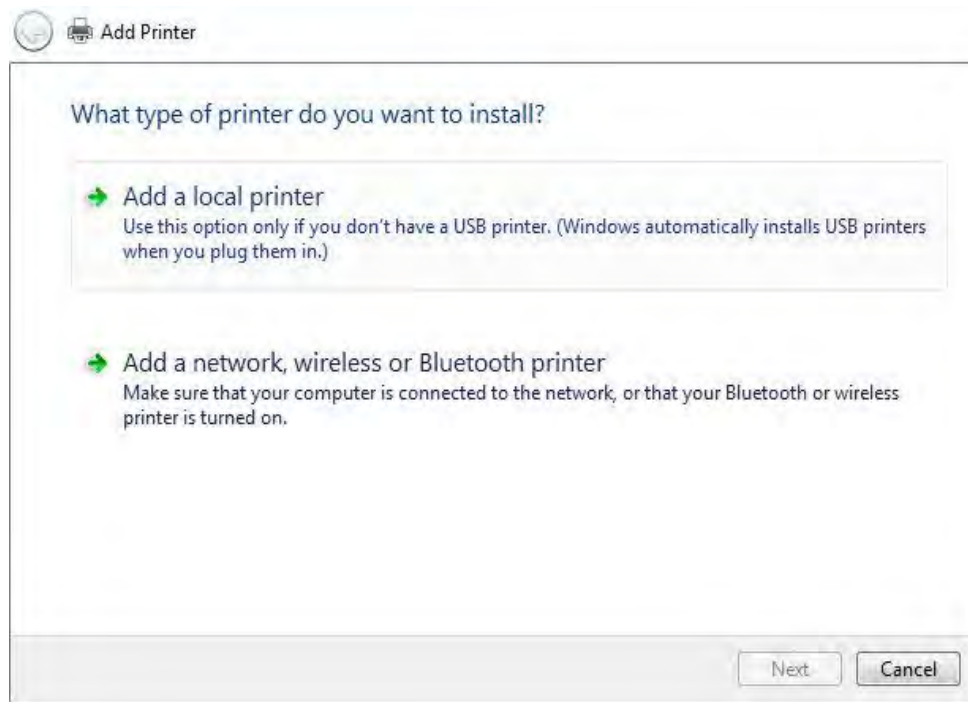


Note : This is for MOST of the Panasonic Printer who are facing when preview no problem but print out part of the contents disappearing or out of position. If your printer is another type u may refer this guide as a guideline to add the corresponding driver of your printer again. May this guide be a help to you.

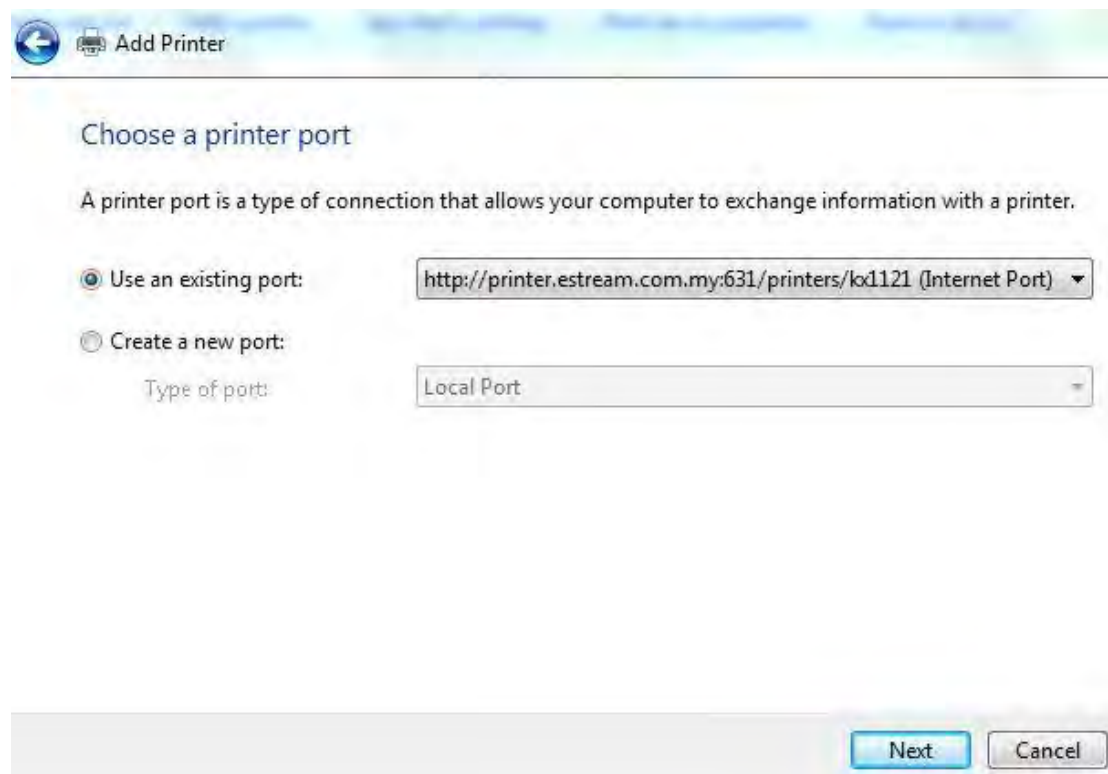
Step 1 : Check the Port of your printer.



Step 2 : Press add a printer and select add a local printer.

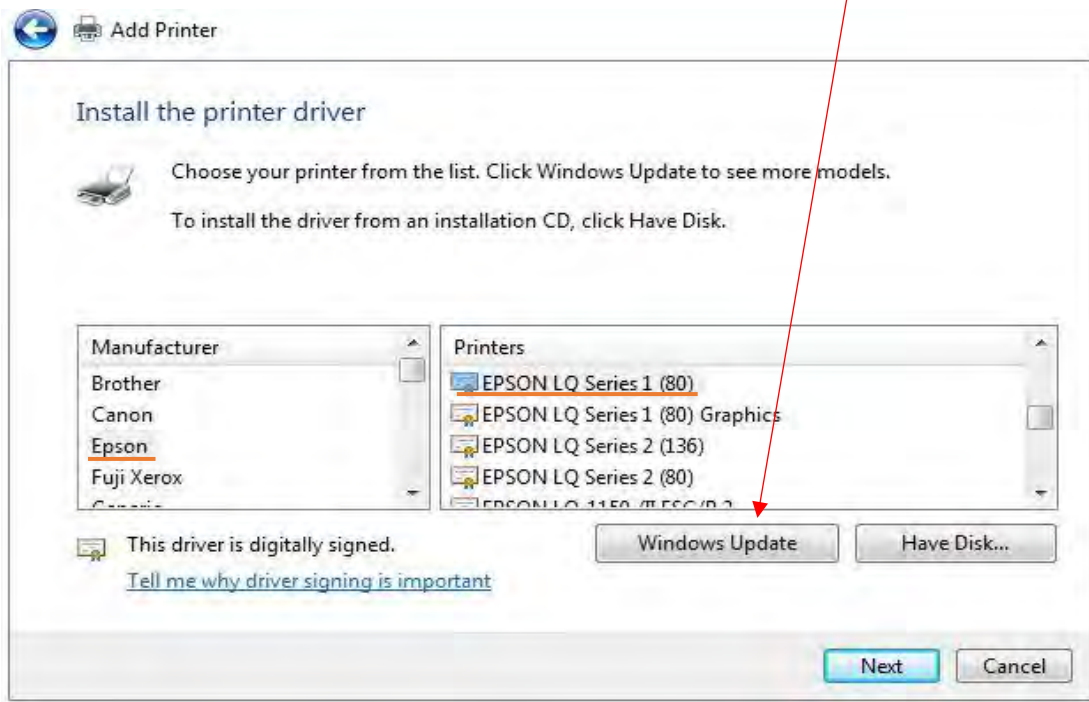


Step 3 : Choose the Port of your printer respectively.



Step 4 : Select Manufacturer : Epson  
Printer : EPSON LQ SERIES 1 (80)

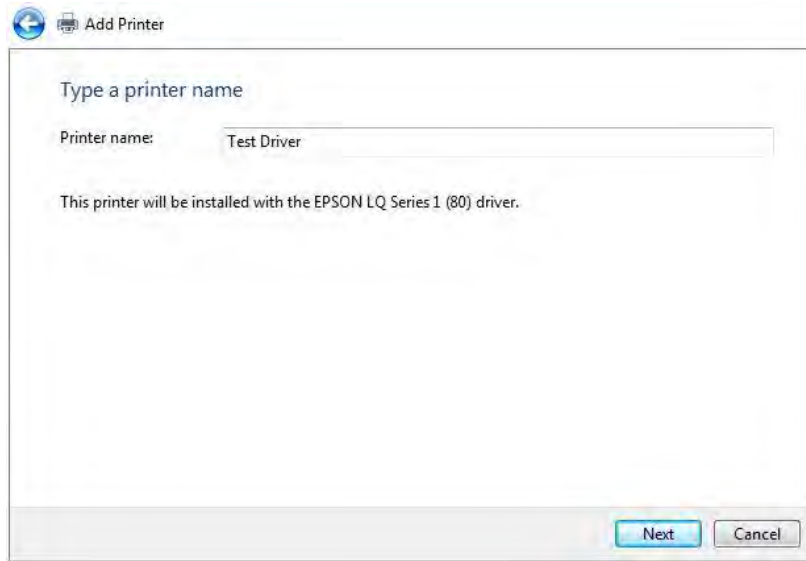
Note : If you cant find the EPSON LQ SERIES 1 (80) Please press Windows Update and select again.



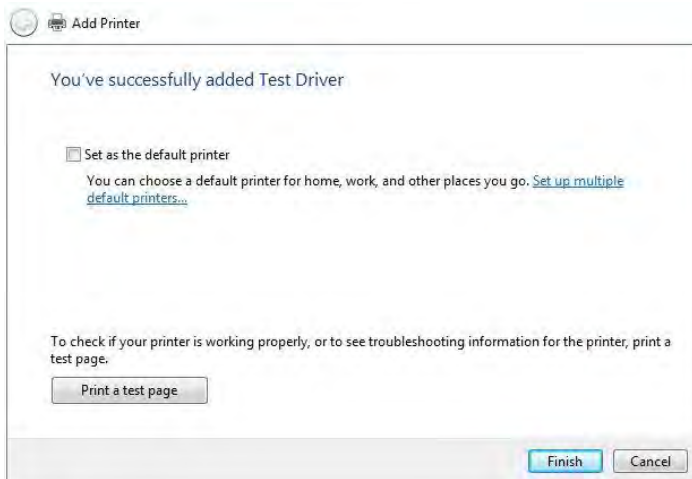
Step 5 : Type in the printer name you desire.



Step 6 : Press next if you don't want to share this printer.



Step 7 : Finish it.



Lastly, go to your Printer Properties | Device Settings | Installable Options | Printable Area | Old OS. You are done. Congratz.

