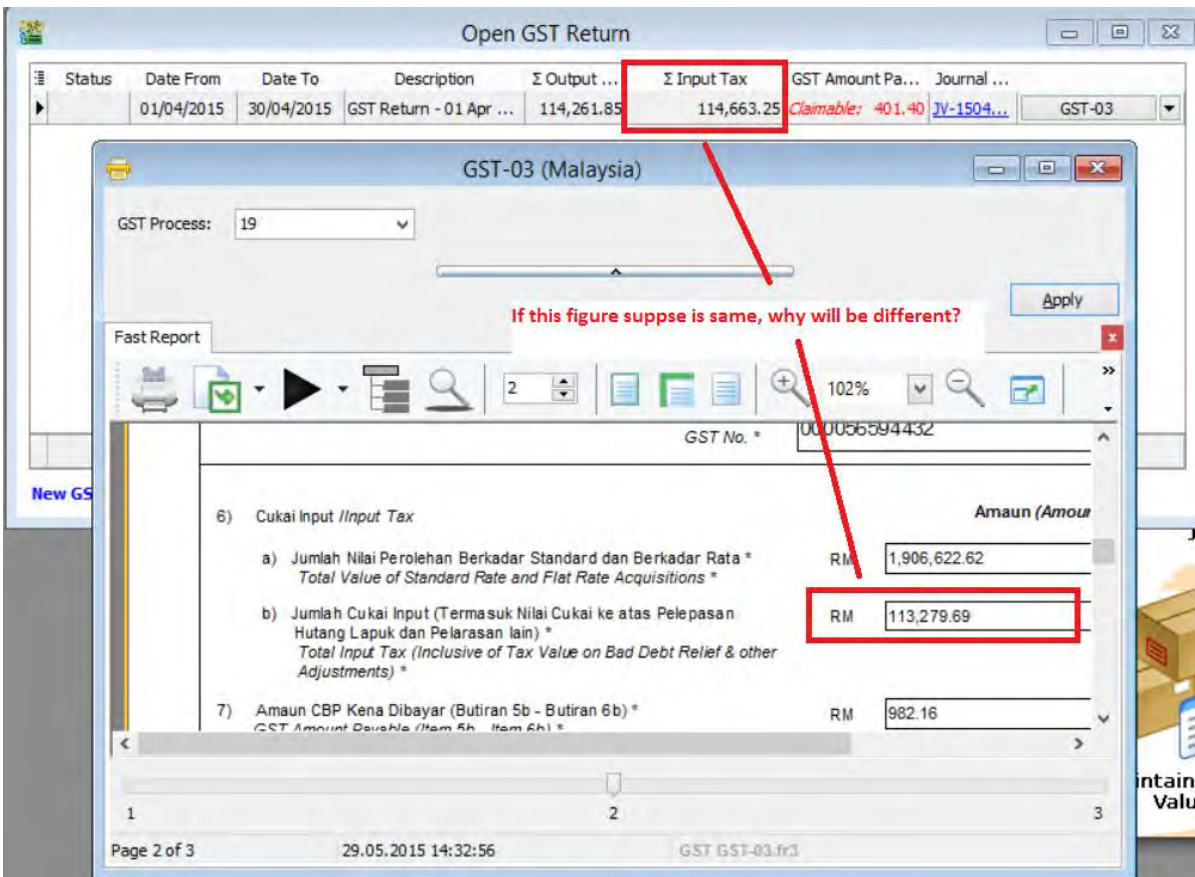


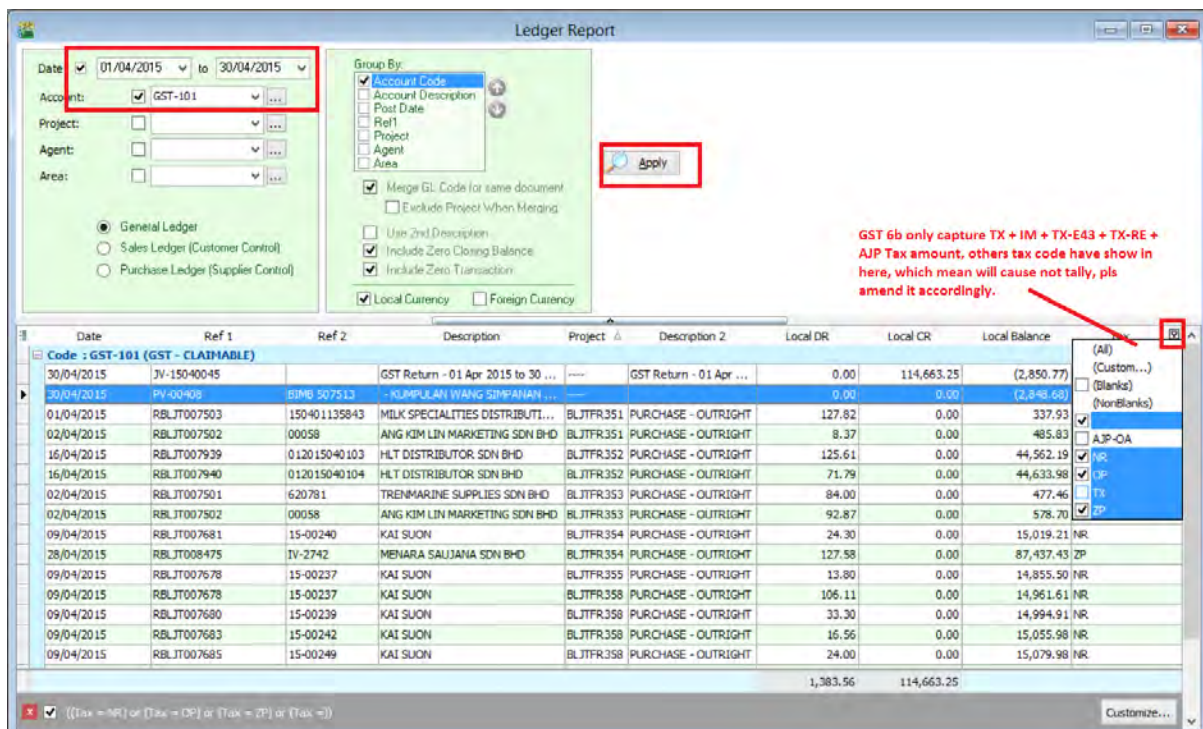
Major is Import from third party software will have this issue.

Situation 1 :



How to check in this kind of Issue ?

1. Go To GL | Print Ledger Report | Select GST-101 GST Claimable | apply
2. Refer below Screen :



Note : GST 6b only capture TX + IM + TX-E43 + TX-RE + AJP Tax amount, others tax code have shown here, which mean will cause not tally, pls amend it accordingly.

3. Drill down the Document from Ledger, then edit and reselect the Tax Code will do.
This case is due to Zero Tax Rate but have tax amount.

In summary :

GST 03 Form Item Detail :

5a SR + DS (Taxable Amount)

5B SR +DS + ADJ (Tax Amount)

6aTX + IM + TX-E43 + TX-RE (Taxable Amount)

6b capture TX + IM + TX-E43 + TX-RE + AJP Tax Amount