

Maintain Stock Item

Maintain Stock Item

Code: iPhone 5 Stock Control Active

Description: iPhone 5

Item Group: ACC Reorder Level: 5 A Remark 1:

Base UOM: UNIT Reorder Qty: 30 B Remark 2:

Ref. Cost: Lead Time: 0 Barcode:

Ref. Price: Sales Tax: Purchase Tax: Bal Qty: -

UOM	RATE	Ref. Cost	Ref. Price	Min Price
UNIT	1	0.00	0.00	

Default UOM:

Sales: Purchase: Stock:

A : Reorder Level

Defi : Reorder level (or reorder point) is the inventory level at which a company would place a new order or start a new manufacturing run.

Give an example how it work in SQL ?

Stock Balance: I Phone 5 (9)

Location	S.O. Qty	P.O. Qty	Qty	Avail. Qty
				9

Stock Quantity Control

Item Code	Description	Location	Out Qty	Qty On Hand	Reorder Level	Min Qty
I Phone 5	I Phone 5		5	9	5	

There are Items Below Qty On Hand, Below Reorder Level or Below Min. Qty.
Do you want to save it?

Yes No

- For this item, Reorder Qty = 5, when Bal Qty less than 5 unit(Which is $9 - 5 = 4$), saving document will prompt(Dialog : Stock Quality Control) to remind you should place an order.

* Stock Quality Control dialog can choose to Turn On (Tools | Option | Miscellaneous | Prompt Negative Stock Quantity Dialog Box | Checked it)

B : Reorder Qty

Defi : *Reorder quantity* is the point at which a business must buy more inventory as to not run out of inventory.

How to check the stock is running out of reorder level ?

1. Stock | Print Stock Reorder Advise | Select any criteria if have | Apply

Item Code	Quantity	Reorder Le...	Reorder Qty	Min Qty	Max Qty	SO Qty	PO Qty	Avail. Qty
ANT	-26	10	20	10	30	34	85	25
E-BAT	8	10	20	10	30	1	87	94
I Phone 5	4	5	30	-	-	-	-	4
M-R-GP300	-1,031	5	10	5	15	-	51	-980
M-STX	1	5	10	5	15	-	99	100
N-3310	-2	5	10	5	15	10	68	56
N-3350	-	5	10	5	15	1	-	-1
N-7110	1	5	10	5	15	-	67	68
P-N-8250	5	5	10	5	15	-	1	6

Count = 9 -1,040

Note :

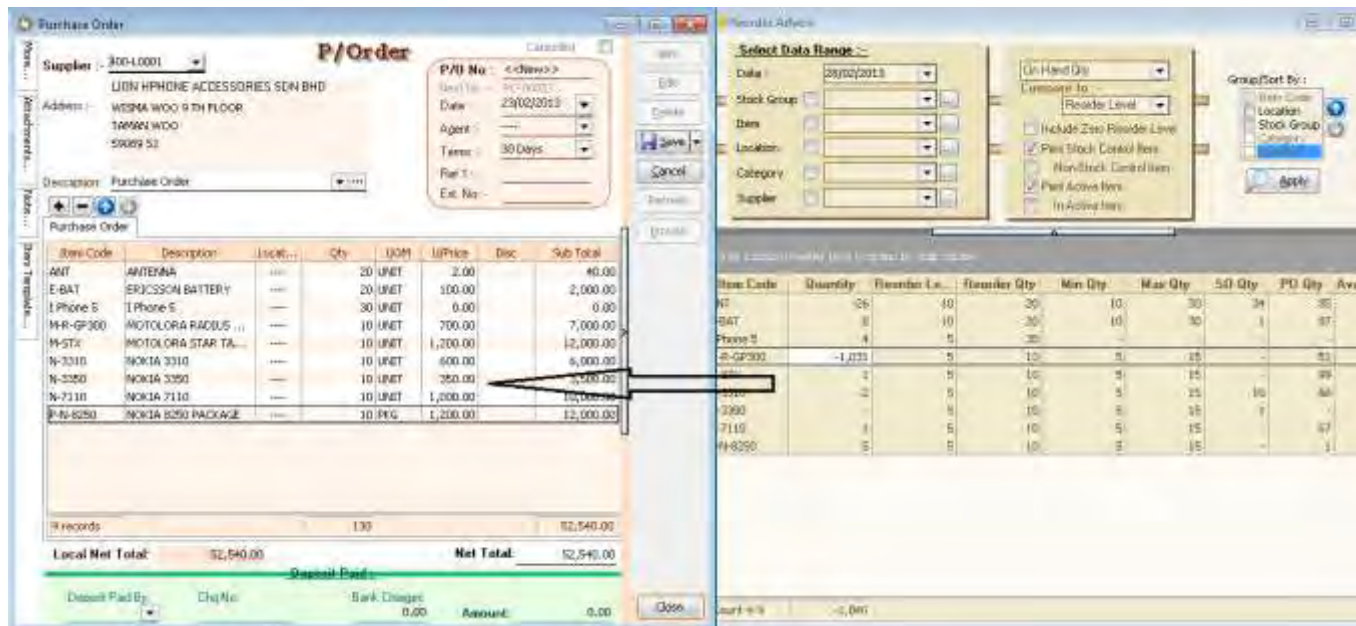
Criteria A : There have option :

- i) On Hand Qty
- ii) On Hand Qty + PO
- iii) On Hand Qty – SO
- iv) On Hand Qty + PO – SO

Vs

- i) Reorder Level
- ii) Min Level
- iii) Max Level

There have fast way to create PO with Reorder QTY. Please see below Screen :



Step :

1. After get the appropriate result of Reorder Advise | Click on First Item | Press Shift Key(Keyboard) | Click on Last Item
2. New PO | Select Supplier | Drag from Reorder Advise to PO Itemize (As per picture).
PO Qty = Reorder Qty